

product: DELPHI PN 15341541  
 material: CUNI3SI1MG  
 surface: F.SN  
 material thickness: 0,25 mm  
 cross section [mm<sup>2</sup>]: 0,35 | 0,5

strip length: 3,50 mm  
 cable type: FLRY-B  
 insulation  $\varnothing$  [mm]: 1,20 - 1,60  
 seal:

**Uncontrolled  
Copy  
For Information only!**

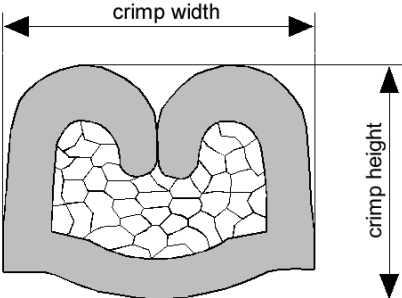
conductor dimension					crimp dimension [mm]					
cable type	cross sect. [mm <sup>2</sup> ]	struct. n x d [mm]	insul. diam. [mm]	tear-out force [N]	core		insulation			
					height $\pm$ 0,03	width $\pm$ 0,10	height $\pm$ 0,10	width $\pm$ 0,10	height $\pm$ tol.	width $\pm$ tol.
FLRY-B	0,35	12 x 0,21	1,30	50	0,95	1,45	1,60	1,80		
FLRY-B	0,5	16 x 0,21	1,50	80	1,05	1,45	1,70	1,90		

core:  
 C-1.40-2.5-6-X  
 DPN 10713739

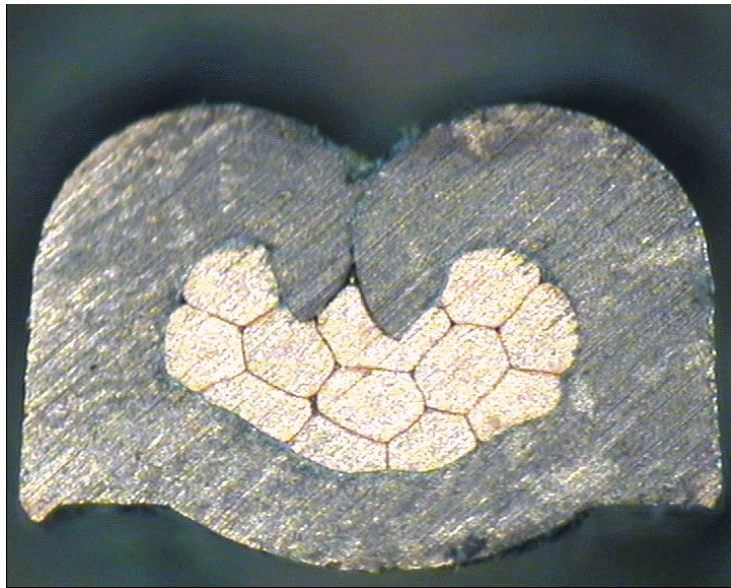
insulation:  
 IS-1.80-2.5-6  
 DPN 10713806

anvil:

two piece anvil:  
 AC-1.40-2.75-A  
 DPN 10803652  
 AI-1.80-3.0-0.2  
 DPN 10769981



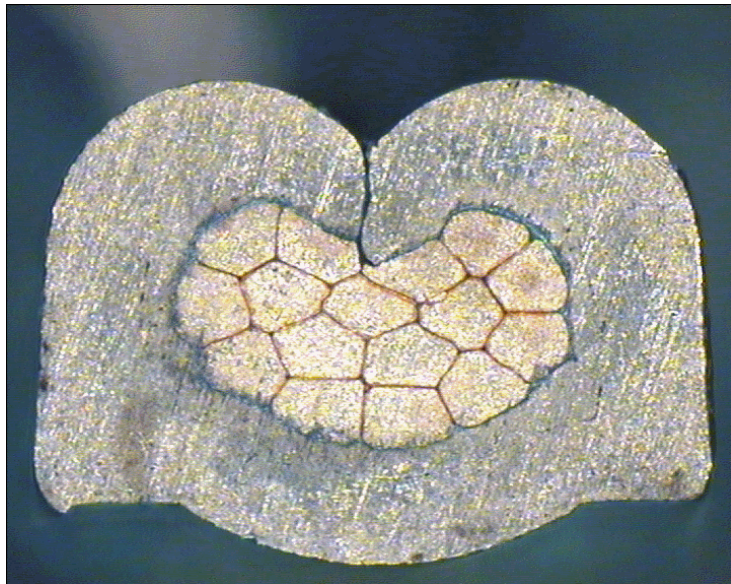
DELPHI PN 15341541



cable:  
 $0,35 \text{ mm}^2 = 12 \times 0,21 \text{ mm}$

crimp height:  
0,95 mm

crimp width:  
1,45 mm



cable:  
 $0,50 \text{ mm}^2 = 16 \times 0,21 \text{ mm}$

crimp height:  
1,05 mm

crimp width:  
1,45 mm