

1544551-1 ✓ ACTIVE

AMP | NG1

TE Internal #: 1544551-1

Housing for Female Terminals, Wire-to-Wire, 5 Position, .457 in [11.6 mm] Centerline, Black, Power, Cable Mount (Free-Hanging), NG1

[View on TE.com >](#)



Connectors > Automotive Connectors > Connector Housings



Connector & Housing Type: **Housing for Female Terminals**

Mating Tab Width: **6.3 mm [ .248 in ]**

Connector System: **Wire-to-Wire**

Number of Positions: **5**

Centerline (Pitch): **11.6 mm [ .457 in ]**

## Features

### Product Type Features

Connector & Housing Shape	Rectangular
Connector & Housing Type	Housing for Female Terminals
Connector System	Wire-to-Wire
Sealable	No
Hybrid Connector	No
Primary Locking Feature	Integrated in Housing

### Configuration Features

Number of Positions	5
Number of Rows	1

### Body Features

Cable Exit Angle	180°
Body Material	PBT GF
Primary Product Color	Black
Connector Code	D

### Contact Features

Contact Size	6.3mm
Contact Type	Receptacle
Mating Tab Width	6.3 mm [.248 in]



### Mechanical Attachment

Mounting Feature	Without
Terminal Position Assurance	Yes
Strain Relief	Without
Mating Alignment Type	Keyed
Mating Alignment	With
Connector Mounting Type	Cable Mount (Free-Hanging)

### Housing Features

Centerline (Pitch)	11.6 mm [.457 in]
--------------------	-------------------

### Dimensions

Product Width	92.05 mm [3.624 in]
Product Length	30.3 mm [1.193 in]
Product Height	24 mm [.945 in]

### Usage Conditions

Operating Temperature (Max)	70 °C, 75 °C, 80 °C, 85 °C [158 °F] [167 °F] [176 °F] [185 °F]
Operating Temperature Range	-40 – 85 °C [-40 – 185 °F]

### Operation/Application

Circuit Application	Power
---------------------	-------

### Industry Standards

UL Flammability Rating	UL 94V-0
------------------------	----------

### Packaging Features

Packaging Quantity	300
Packaging Method	Box

### Other

Connector Position Assurance Capable	No
--------------------------------------	----

### Product Compliance

[For compliance documentation, visit the product page on TE.com>](#)

EU RoHS Directive 2011/65/EU	Compliant
EU ELV Directive 2000/53/EC	Compliant
China RoHS 2 Directive MIIT Order No 32, 2016	No Restricted Materials Above Threshold



EU REACH Regulation (EC) No. 1907/2006

Current ECHA Candidate List: JAN 2022 (223)

Candidate List Declared Against: JAN 2022 (223)

Does not contain REACH SVHC

Halogen Content

Low Halogen - Br, Cl, F, I < 900 ppm per homogenous material. Also BFR/CFR/PVC Free

Solder Process Capability

Not applicable for solder process capability

Product Compliance Disclaimer

This information is provided based on reasonable inquiry of our suppliers and represents our current actual knowledge based on the information they provided. This information is subject to change. The part numbers that TE has identified as EU RoHS compliant have a maximum concentration of 0.1% by weight in homogenous materials for lead, hexavalent chromium, mercury, PBB, PBDE, DBP, BBP, DEHP, DIBP, and 0.01% for cadmium, or qualify for an exemption to these limits as defined in the Annexes of Directive 2011/65/EU (RoHS2). Finished electrical and electronic equipment products will be CE marked as required by Directive 2011/65/EU. Components may not be CE marked. Additionally, the part numbers that TE has identified as EU ELV compliant have a maximum concentration of 0.1% by weight in homogenous materials for lead, hexavalent chromium, and mercury, and 0.01% for cadmium, or qualify for an exemption to these limits as defined in the Annexes of Directive 2000/53/EC (ELV). Regarding the REACH Regulation, the information TE provides on SVHC in articles for this part number is based on the latest European Chemicals Agency (ECHA) 'Guidance on requirements for substances in articles' posted at this URL: <https://echa.europa.eu/guidance-documents/guidance-on-reach>

### Compatible Parts

TE Part # 1544133-1  
CLIP 6,35 NG1

TE Part # 1544552-1  
CAPOT PC 5V

TE Part # 1801376-1  
SHELL HSG, 5 POSN, 6.35NG1, LOW PROFILE

TE Part # 6-1579018-0  
EXTRACTION TOOL

### Also in the Series | NG1

Automotive Connector Caps & Covers (2)

Automotive Housings(47)

Automotive Seals & Cavity Plugs(8)

Automotive Terminals(18)



Insertion &amp; Extraction Tools(12)

## Customers Also Bought



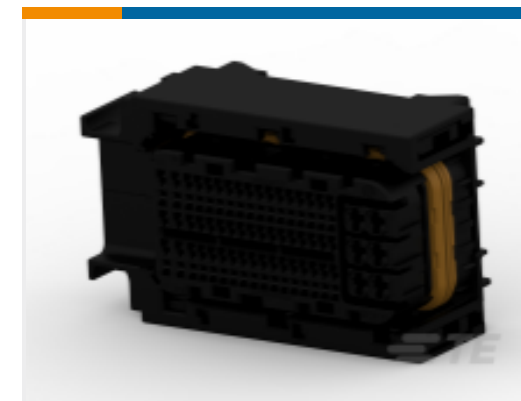
TE Part #2103346-2  
HVA280 2 Bay Header Sub-Assy, KEY D, F



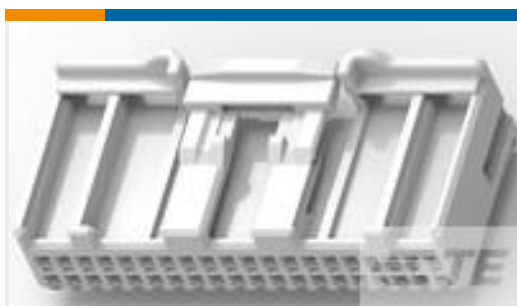
TE Part #927824-2  
TIMER, RECEPTACLE AND TAB



TE Part #1452158-1  
MQS1,5 Sn rec CB unseal. 0,35-0,5



TE Part #1-2208709-1  
91POS, MIXED, REC HSG, ASSY, SEALED



TE Part #1379671-5  
40W PLUG HSG ASSY NATURAL



TE Part #368036-1  
CLIP FOR 070 & EJ MK-II(DAEWOO)

## Documents

### Product Drawings

#### CONNECTOR 5V 6.35

English

### CAD Files

#### Customer View Model

[ENG\\_CVM\\_CVM\\_1544551-1\\_D.2d\\_dxf.zip](#)

English

#### 3D PDF

3D

#### Customer View Model

[ENG\\_CVM\\_CVM\\_1544551-1\\_D.3d\\_igs.zip](#)

English

#### Customer View Model

[ENG\\_CVM\\_CVM\\_1544551-1\\_D.3d\\_stp.zip](#)

English

By downloading the CAD file I accept and agree to the [Terms and Conditions](#) of use.



---

## Product Specifications

### Product Specification

English

---

## Product Environmental Compliance

### Product Compliance

English

### Product Compliance

English

---

## Instruction Sheets

### Instruction Sheet (non U.S.)

English

### Instruction Sheet (non U.S.)

English