

177919-1 ✓ ACTIVE



## Power Double Lock

TE Internal #: 177919-1

Rectangular Connector Locking, Double Lock Plate, 3 Position, .156 in [3.96 mm] Centerline, Wire & Cable, UL 94V-0, Power Double Lock

[View on TE.com >](#)

Connectors > Rectangular Connectors > Rectangular Connector Accessories > Locking > Power Double Lock TPA



Connector & Contact Retention Accessory Type: **Double Lock Plate**

Number of Positions: **3**

Centerline (Pitch): **3.96 mm [ .156 in ]**

Sealable: **No**

Connector & Contact Terminates To: **Wire & Cable**

[All Power Double Lock TPA \(6\)](#)

## Features

### Product Type Features

Product Type	Accessory
Glow Wire Rating	Standard Part - Not Glow Wire
Connector & Contact Retention Accessory Type	Double Lock Plate
Sealable	No
Connector & Contact Terminates To	Wire & Cable

### Configuration Features

Number of Positions	3
---------------------	---

### Body Features

Color	Natural
-------	---------

### Housing Features

Housing Material	Glass-Filled Nylon 66
Centerline (Pitch)	3.96 mm[.156 in]



### Dimensions

Height	4.46 mm
Length	16.1 mm

### Usage Conditions

Operating Temperature Range	-30 – 105 °C[-22 – 221 °F]
-----------------------------	----------------------------

### Operation/Application

For Use With	"Cap: 177907, 177909, 177911, 179464 or 179466", "Plug: 177899, 177901 or 177903"
--------------	---

### Industry Standards

UL Flammability Rating	UL 94V-0
------------------------	----------

### Packaging Features

Packaging Method	Bag/Box
Packaging Quantity	1000

### Other

Comment	Quantity required based on connector being used.
---------	--

## Product Compliance

[For compliance documentation, visit the product page on TE.com>](#)

EU RoHS Directive 2011/65/EU	Compliant
EU ELV Directive 2000/53/EC	Compliant
China RoHS 2 Directive MIIT Order No 32, 2016	No Restricted Materials Above Threshold
EU REACH Regulation (EC) No. 1907/2006	Current ECHA Candidate List: JAN 2022 (223) Candidate List Declared Against: JAN 2022 (223) Does not contain REACH SVHC
Halogen Content	Not Low Halogen - contains Br or Cl > 900 ppm.
Solder Process Capability	Not applicable for solder process capability

#### Product Compliance Disclaimer

This information is provided based on reasonable inquiry of our suppliers and represents our current actual knowledge based on the information they provided. This information is subject to change. The part numbers that TE has identified as EU RoHS compliant have a maximum concentration of 0.1% by weight in homogenous materials for lead, hexavalent chromium, mercury, PBB, PBDE, DBP, BBP, DEHP, DIBP, and 0.01% for cadmium, or qualify for an exemption to these limits as defined in the Annexes of Directive 2011/65/EU (RoHS2). Finished electrical and electronic equipment products will be CE marked as required by Directive 2011/65/EU. Components may not be CE marked. Additionally, the part

numbers that TE has identified as EU ELV compliant have a maximum concentration of 0.1% by weight in homogenous materials for lead, hexavalent chromium, and mercury, and 0.01% for cadmium, or qualify for an exemption to these limits as defined in the Annexes of Directive 2000/53/EC (ELV). Regarding the REACH Regulation, the information TE provides on SVHC in articles for this part number is based on the latest European Chemicals Agency (ECHA) 'Guidance on requirements for substances in articles' posted at this URL: <https://echa.europa.eu/guidance-documents/guidance-on-reach>

## Compatible Parts



TE Part # CAT-P87024-P729A  
Glow Wire Power Double Lock Plug



TE Part # 368588-6  
PDL 6P CAP 3.96 D/R P/M(GWT) B



TE Part # CAT-P87024-C1701A  
Glow Wire Power Double Lock Cap



TE Part # 2301242-1  
PDL CONN. 3.96MM PITCH PLUG HOUSING 6POS



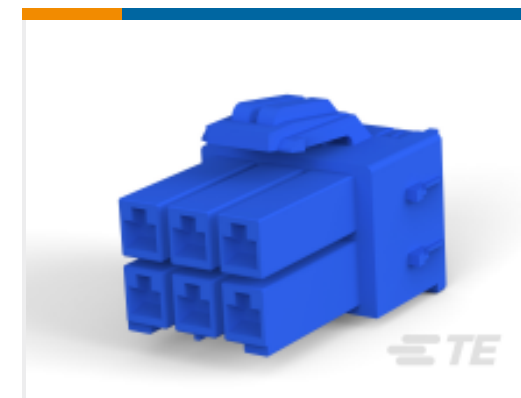
TE Part # 5-179464-1  
POWER DBL LOCK CAP HSG F/H 3P (GWT)



TE Part # 2005254-4  
PDL 9P PLUG 3.96 T/R(GWT) YEL



TE Part # 2005254-6  
PDL 9P PLUG 3.96 T/R(GWT) BLU



TE Part # 3-177901-6  
POWER DBL LOCK PLUG HSG 6P (bl)



TE Part # 368576-4  
PDL 6P PLUG 3.96 D/R(GWT) YEL



TE Part # 368588-4  
PDL 6P CAP 3.96 D/R P/M(GWT) Y



TE Part # 7-177901-1  
POWER D/LOCK PLUG 6P AS MOLD

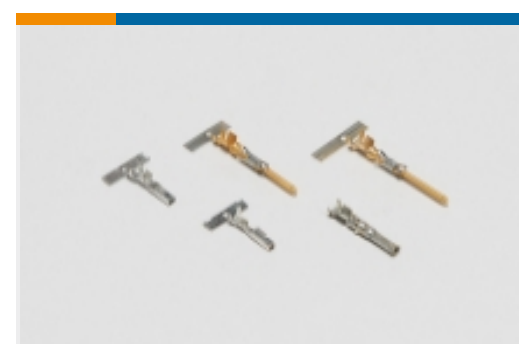
## Also in the Series | Power Double Lock



Connector Contacts(1)



Insertion & Extraction Tools(2)



Power Contacts(23)



Rectangular Connector Locking(14)



Rectangular Power Connectors(280)

## Customers Also Bought



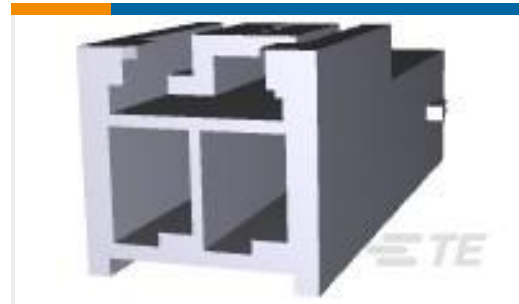
TE Part #177909-1  
POWER DBL LOCK CAP HSG P/M 6P



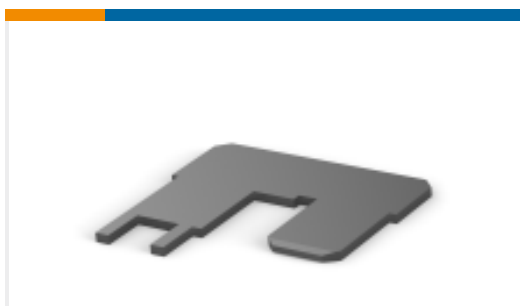
TE Part #177905-1  
POWER DBL LOCK PLUG HSG 12P



TE Part #179466-1  
AMP POWER DBL LOCK CAP HSG 6P



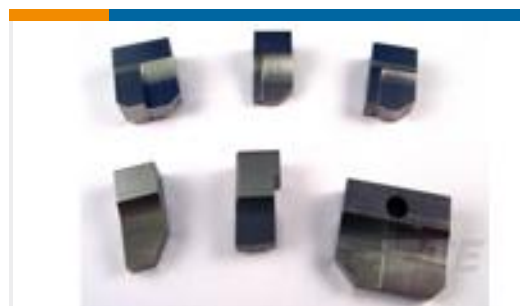
TE Part #179463-1  
POWER DBL LOCK CAP HSG F/H 2P



TE Part #1742303-1  
250 FASTON,PCB TAB,TNBR



TE Part #1-462808-9  
CRIMPER, BLUNT F



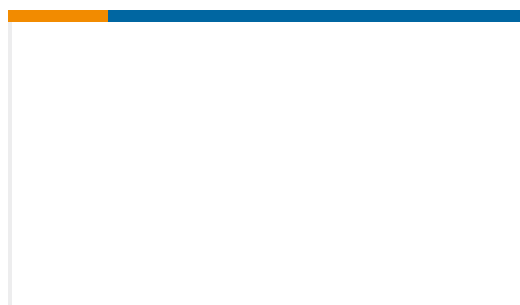
TE Part #5-1333219-1  
ANVIL, E/FEED (.110)



TE Part #7-1633961-7  
CRIMPER, INSULATION F PREMIUM



TE Part #8-240651-6  
BLADE, SLUG



TE Part #2108798-1  
CLUSTER BLOCK 3P CLIP TPA HSG

## Documents

### Product Drawings

[POWER DBL LOCK PLATE 3P](#)

English

### CAD Files

[Customer View Model](#)

[ENG\\_CVM\\_CVM\\_177919-1\\_E.2d\\_dxf.zip](#)

English

[3D PDF](#)



3D

Customer View Model

[ENG\\_CVM\\_CVM\\_177919-1\\_E.3d\\_igs.zip](#)

English

Customer View Model

[ENG\\_CVM\\_CVM\\_177919-1\\_E.3d\\_stp.zip](#)

English

By downloading the CAD file I accept and agree to the [Terms and Conditions](#) of use.

### Datasheets & Catalog Pages

[SOFT\\_SHELL\\_PIN\\_AND\\_SOCKET\\_CONNECTORS\\_CATALOG](#)

English

[1773458-5\\_POWER\\_DBL\\_LOCK\\_\(PDL\)\\_CONNECTORS](#)

English

### Product Specifications

[Engineering Report](#)

English

### Product Environmental Compliance

[MD\\_177919-1\\_11192018927\\_dmtec](#)

English

[MD\\_177919-1\\_11192018927\\_dmtec](#)

English

### Instruction Sheets

[Instruction Sheet \(non U.S.\)](#)

English

[AMP POWER DOUBLELOCK CONNECTOR SERIES](#)

English