

product: DELPHI PN 15432210

material: CUFE2P

**VERSION I**

surface: F.SN3

material thickness: 0,25 mm

cross section [mm²]: 0,5 | 0,75 | 1,0

strip length: 4,00 mm

cable type: FLRY-B

insulation ø [mm]: 1,40 - 2,10

seal: DPN 15327918  
DPN 15339412 (1,0)

**Uncontrolled  
Copy**  
**For Information only!**

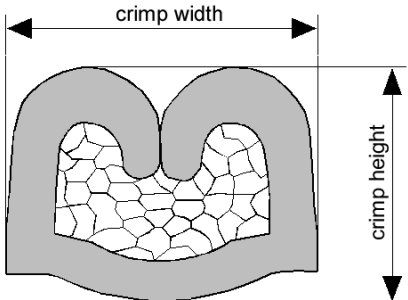
conductor dimension					crimp dimension [mm]					
cable type	cross sect. [mm²]	struct. n x d [mm]	insul. diam. [mm]	tear-out force [N]	core		insulation			
					height ± 0,05	width ± 0,10	height ± 0,10	width ± 0,10	height ± tol.	width ± tol.
FLRY-B	0,5	16 x 0,21	1,50	80	1,10	1,90	2,80	3,10		
FLRY-B	0,75	24 x 0,21	1,80	120	1,20	1,90	2,90	3,10		
FLRY-B	1,0	32 x 0,21	2,00	160	1,30	1,95	3,00	3,15		

**core:**  
C-1.85-3.0-12  
DPN 10713693

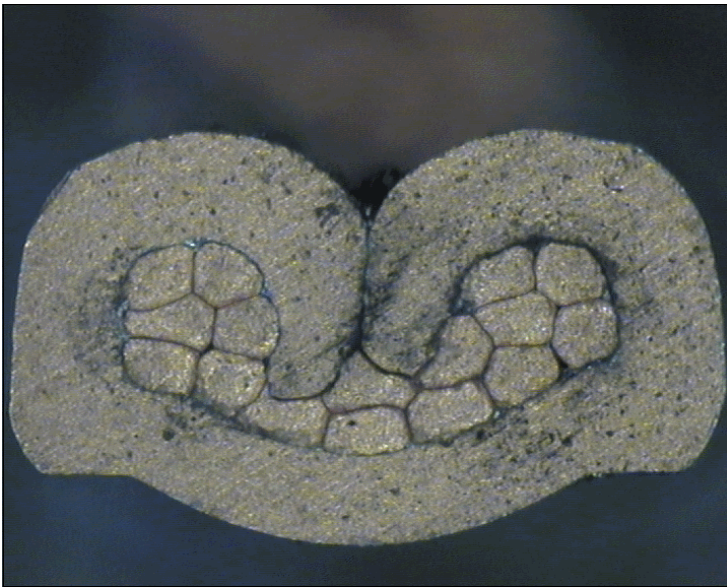
**insulation:**  
IS-3.00-3.0-10  
DPN 10915169

**anvil:**

**two piece anvil:**  
AC-1.85-3.25  
DPN 10764127  
AI-3.00-3.8-0.8  
DPN 10807031



DELPHI PN 15432210



cable:  
 $0,50 \text{ mm}^2 = 16 \times 0,21 \text{ mm}$

crimp height:  
1,10 mm

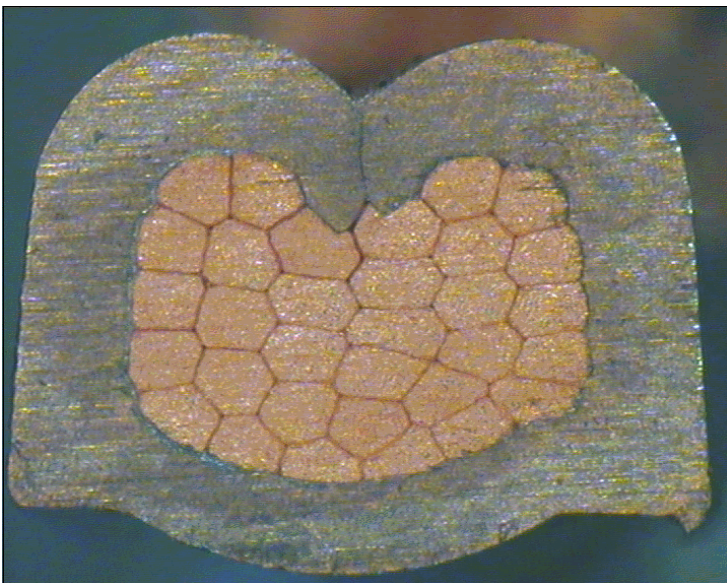
crimp width:  
1,90 mm



cable:  
 $0,75 \text{ mm}^2 = 24 \times 0,21 \text{ mm}$

crimp height:  
1,20 mm

crimp width:  
1,90 mm



cable:  
 $1,00 \text{ mm}^2 = 32 \times 0,21 \text{ mm}$

crimp height:  
1,30 mm

crimp width:  
1,95 mm