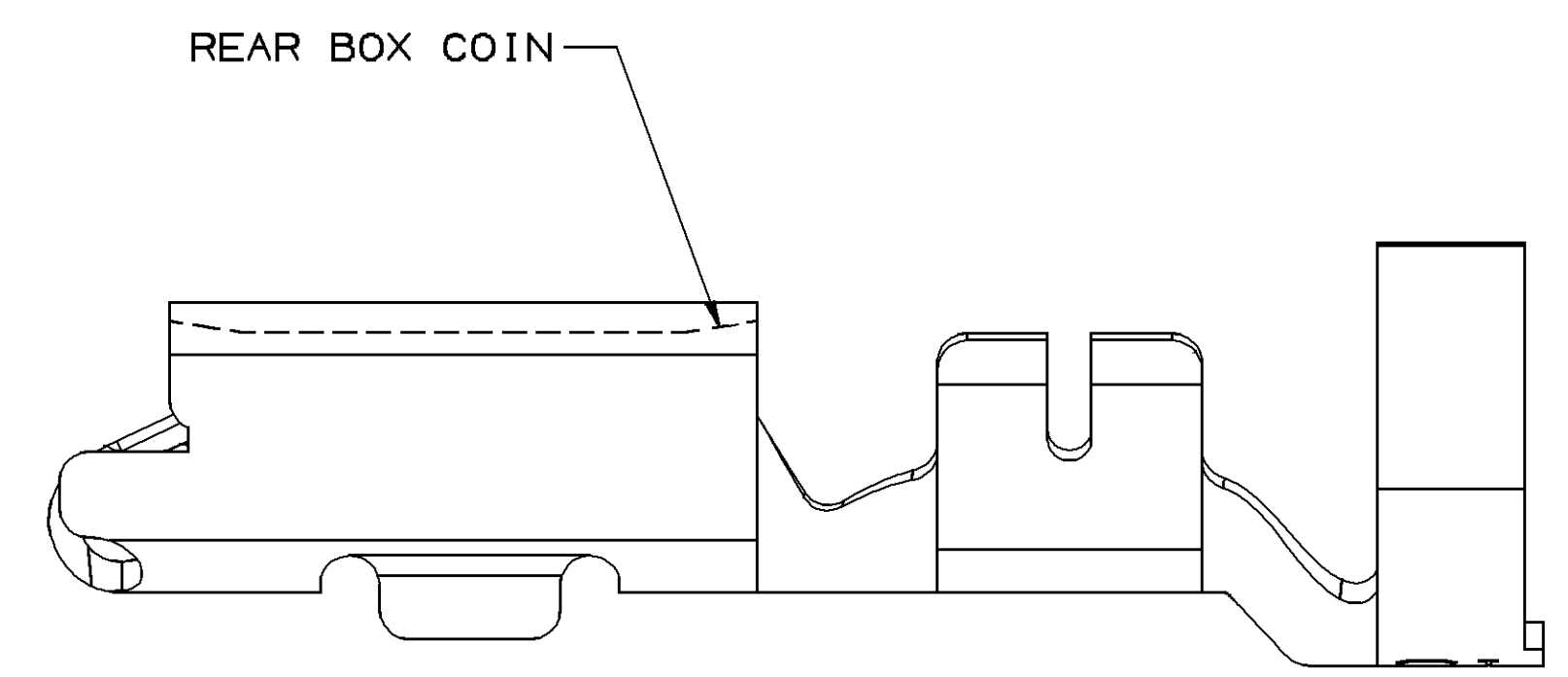
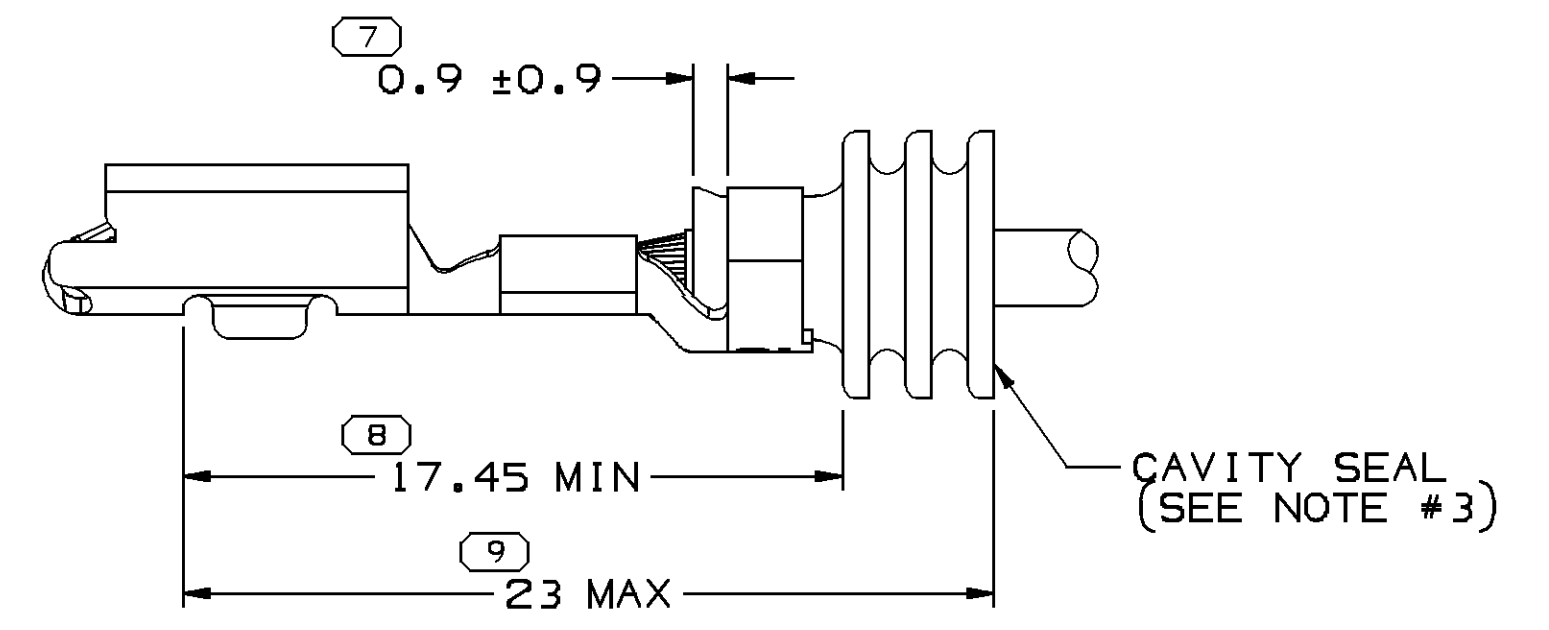


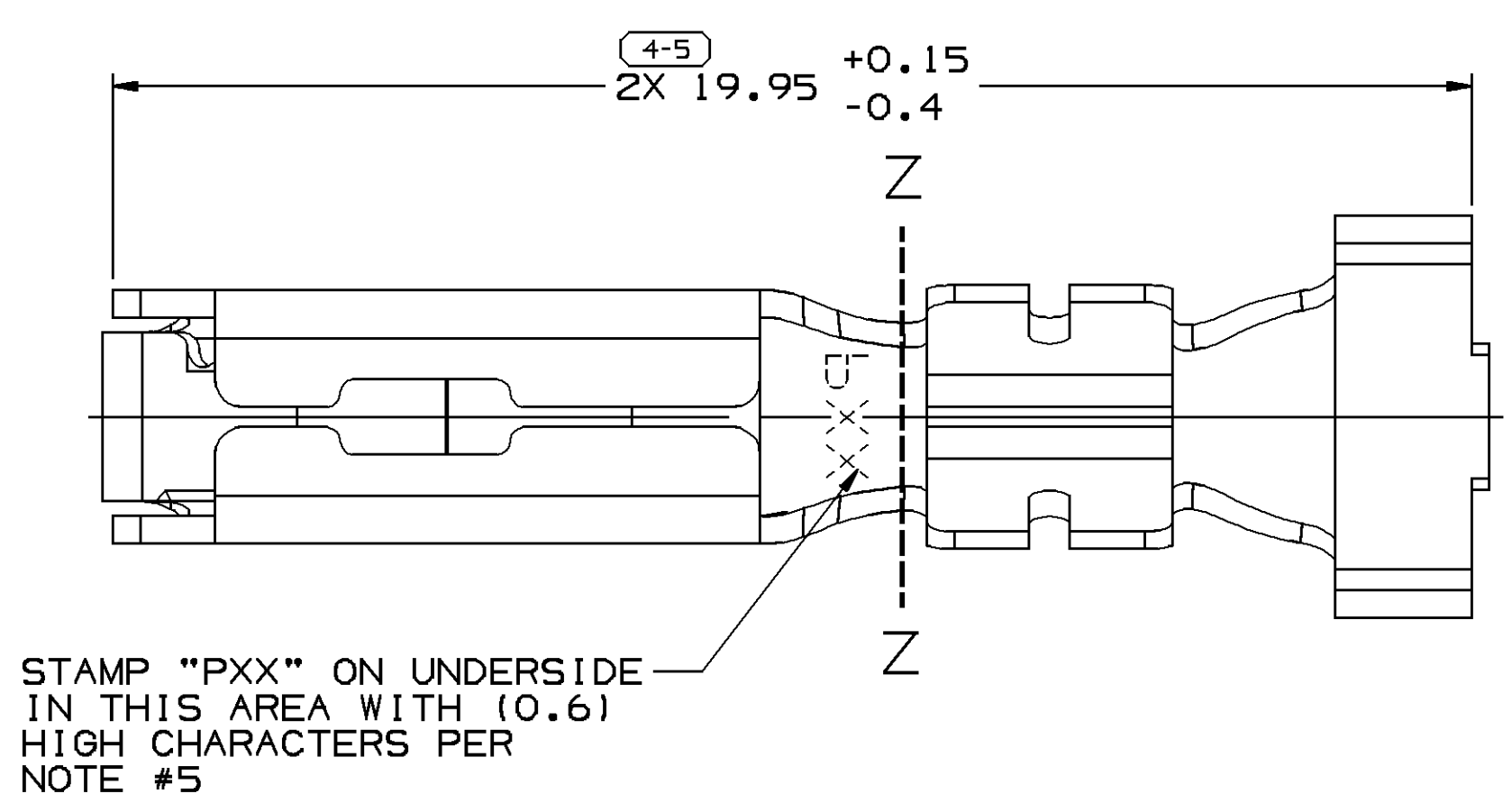
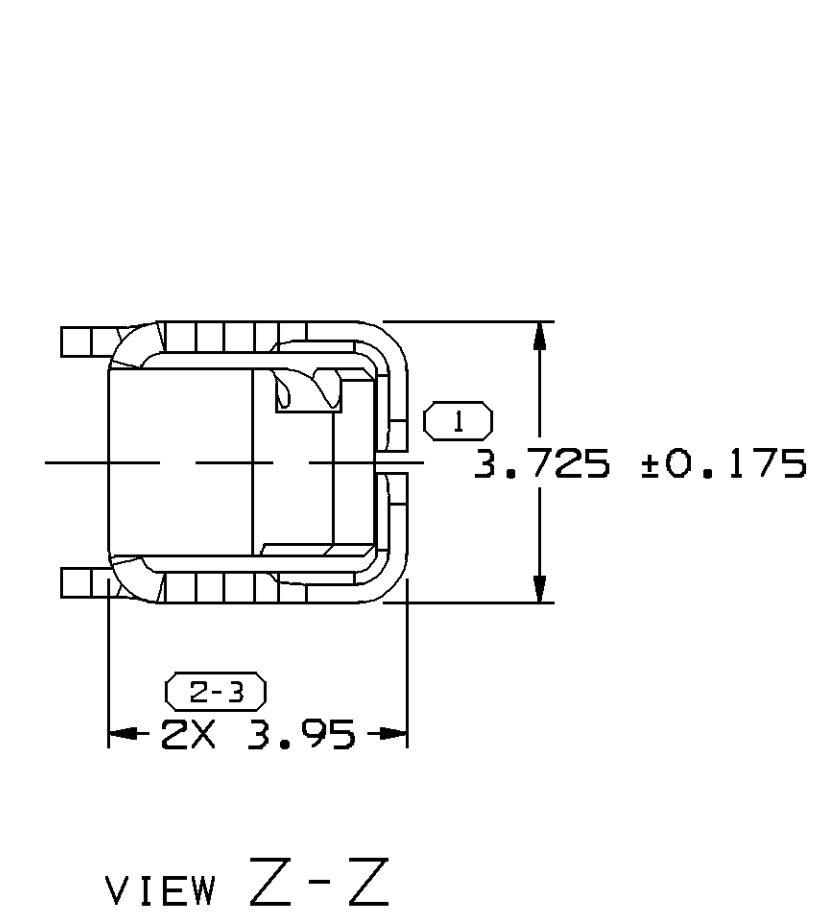
SYMBOL DEFINITION		MISSING NUMBERS		DWG STATUS			REVISION HISTORY			AUTH	DR	APVD1	APVD2
DATE	STG	REV	N/P	CHG	ZONE								
22FE00	R	001	-	-			ALL PARTS - REDRAWN TO PD	000009	EAR	RCH	OG		
22FE00	R	002	-	-			15383341 - RELEASED	000005	EAR	RCH	OG		
100C06	R	03	-	-			ALL PARTS - ADDED TERMINAL ID NOTE AND NOTE #4 & #5	285378	JTZ	JAA	MKM		
02N006	R	04	-	-			12176855 - MAT'L SPEC WAS M3658258	286475	RTV	JAA	MKM		
08DE06	R	05	-	-			12176855 MATERIAL SPEC REVISED PER CHANGE NOTICE 281527	287674	MM	MM	MKM		



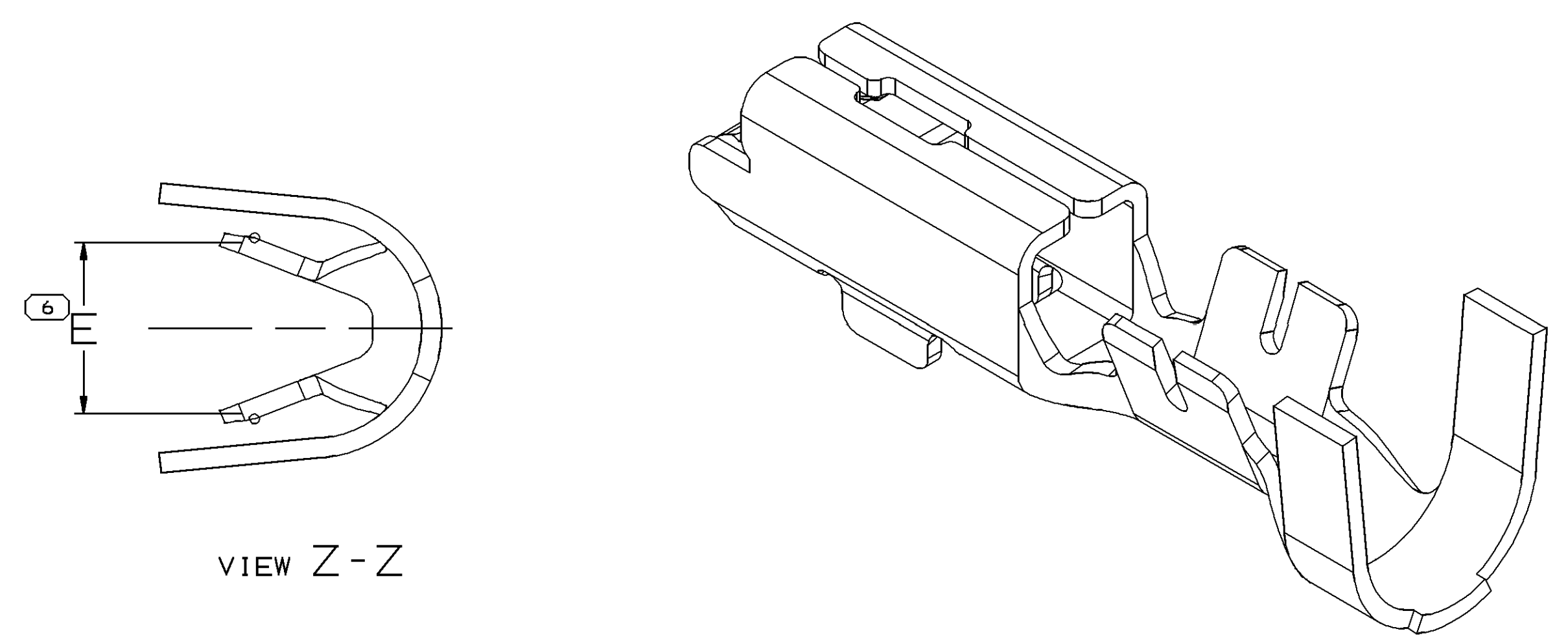
OPTIONAL CONSTRUCTION



OVERALL DIMENSION MUST BE HELD TO ENSURE PROPER FUNCTION OF TPA.  
 TERMINAL TO SEAL RELATIONSHIP  
 SCALE 5:1



STAMP "PXX" ON UNDERSIDE IN THIS AREA WITH (0.6) HIGH CHARACTERS PER NOTE #5



NOTES

- UNLESS OTHERWISE SPECIFIED AND/OR INDICATED: DIMENSIONS ARE TO FACE OF VIEW SHOWN AND AUTOMATICALLY ROUNDED BY COMPUTER FOR INSPECTION (SEE MATH MODEL FOR PRECISE DIMENSIONS). FOR ALL OTHER DIMENSIONS NOT SHOWN BUT REQUIRED FOR TOOL BUILD, SEE MATH MODEL FOR PRECISE TOOL PATH DATA.
- RECOMMENDED MATING BLADE - WIDTH 2.8 ± 0.08, THICKNESS 0.825 ± 0.035
- TERMINAL TO CRIMP AROUND AND RETAIN CAVITY SEAL 12015323 OR EQUIVALENT.
- DO NOT PROBE, TEST OR OTHERWISE CONTACT THE INTERIOR REGION (THE SPRING OR ANY MOVING PART) OF THIS TERMINAL. SEVERE DAMAGE CAN OCCUR, COMPROMISING THE PERFORMANCE OF THE ELECTRICAL INTERFACE.
- "PXX" INDICATES "P" PLUS THE LAST TWO DIGITS OF MAKE DIE SERIES NUMBER (P01, P02, P03, ETC.).

PART NO	REV	N/P	STATUS	MAT'L SIZE	MAT'L SPEC	PART NO	REV	N/P	STATUS	MAT'L SPEC	SIZE (MM²)	DIA	ID	BLANK TYPE
				0.406X30.56		15383341	01	AB		M3640258 C17410 1/2 HD	3/2	3.8-2.45	13	4
				0.406X30.56		12176855	A4			M3644258 C17410 1/2 HD	5/3	4.2-3	11	4.6
				0.406X30.56		12129409	D3			M1574258 C42500 EX HD	2/1	3.05-2.48	15	3.7
				0.406X30.56		12110853	E2			M1574258 C42500 EX HD	5/3	4.2-3	11	4.6

PROCESS SENSITIVE DIMENSION	
DIMENSIONS ENCLOSED IN ( ) INDICATE REFERENCE DIMENSIONS AND NO TOLERANCE LIMITS ARE ESTABLISHED	CHART D
FROM TO	> 12
TOLERANCE UNLESS OTHERWISE SPECIFIED	±0.2
ANGULAR TOLERANCE	±2°

DWG TYPE: PART DRAWING

STYLE: [Symbol]

VOLUME (C/P): [Symbol] DISTR CODE: [Symbol]

UNLESS OTHERWISE SPECIFIED  
 THIS DOCUMENT IS IN ACCORDANCE WITH ASME Y14.5M-1994 AS AMENDED BY THE 2001 GLOBAL DIMENSIONING AND TOLERANCING ADDENDUM-2001. SEPARATE PATTERNS OF FEATURES MAY BE GAGED SEPARATELY REGARDLESS OF DATUM REFERENCES.

ALL DIMENSIONS ARE IN MILLIMETERS

REFERENCE: [Symbol]

THIRD ANGLE PROJECTION

DO NOT SCALE USE MATH DATA

UNIGRAPHICS

**DELPHI**

DELPHI PACKARD ELECTRIC SYSTEMS  
 WARREN, OH

DR	DATE
APVD1 E. RODRIGUEZ	22FE00
APVD2 R. CHACON	09MR00
APVD3 O. GALLEGOS	09MR00
APVD4	
APVD5	

SUBSTANCES OF CONCERN AND RECYCLED CONTENT PER DELPHI 10945001

MATERIAL SEE CHART

DRAWING NAME: TAXI TERM F M/P 280 SEALED

DRAWING NUMBER: 12129032

SIZE	SCALE	FRAME NO	SHEET NO	STG	REV	N/P
A1	10:1	1 OF 1	1 OF 1	R	05	-