

product: DELPHI PN 12129361
 material: CUBE
 surface: SN
 material thickness: 0,20 mm
 cross section [mm²]: 0,35 | 0,5

strip length: 4,20 mm
 cable type: FLRY-B
 insulation ø [mm]: 1,20 - 1,60
 seal:

**Uncontrolled
Copy**
For Information only!

conductor dimension					crimp dimension [mm]					
cable type	cross sect. [mm ²]	struct. n x d [mm]	insul. diam. [mm]	tear-out force [N]	core		insulation			
					height ± 0,03	width ± 0,10	height ± 0,10	width ± 0,10	height ± tol.	width ± tol.
FLRY-B	0,35	12 x 0,21	1,30	50	0,95	1,40	1,60	1,90		
FLRY-B	0,5	16 x 0,21	1,50	80	1,05	1,40	1,70	1,90		

core:
 C-1.40-3.5-6
 DPN 10713744

insulation:
 I-1.80-1.5-6
 DPN 10805450

anvil:
 AS-1.40-1.80-6.1-2.5-0
 DPN 10714385

two piece anvil:
 AC-1.40-3.75
 DPN 10784488
 AI-1.80-2.4-0
 DPN 10806718



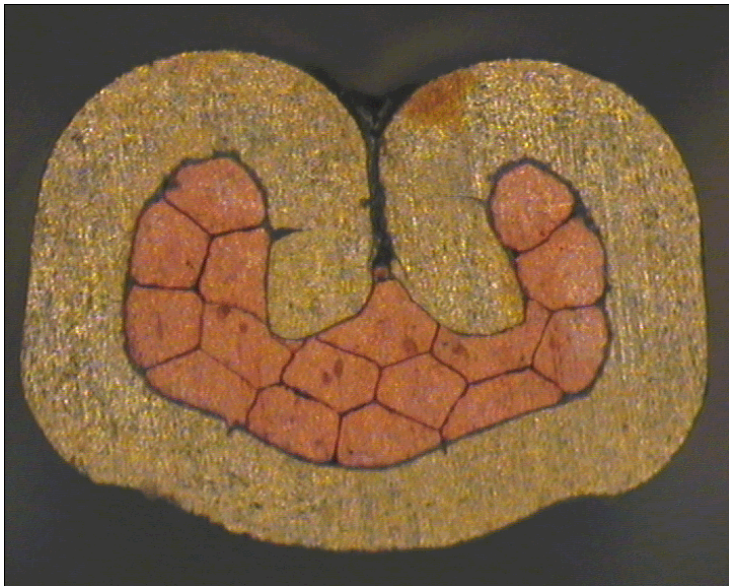
DELPHI PN 12129361



cable:
 $0,35 \text{ mm}^2 = 12 \times 0,21 \text{ mm}$

crimp height:
0,95 mm

crimp width:
1,40 mm



cable:
 $0,50 \text{ mm}^2 = 16 \times 0,21 \text{ mm}$

crimp height:
1,05 mm

crimp width:
1,40 mm