

Crimp - Specification

product : DELPHI PN 12077628

VERSION I

material : CUSN3ZN9
 surface : SN
 material thickness : 0,38 mm

cross-sec. [mm²] : 0,5/4x

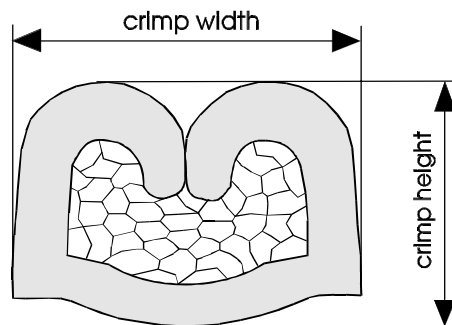
strip length [mm] : 5,00 mm

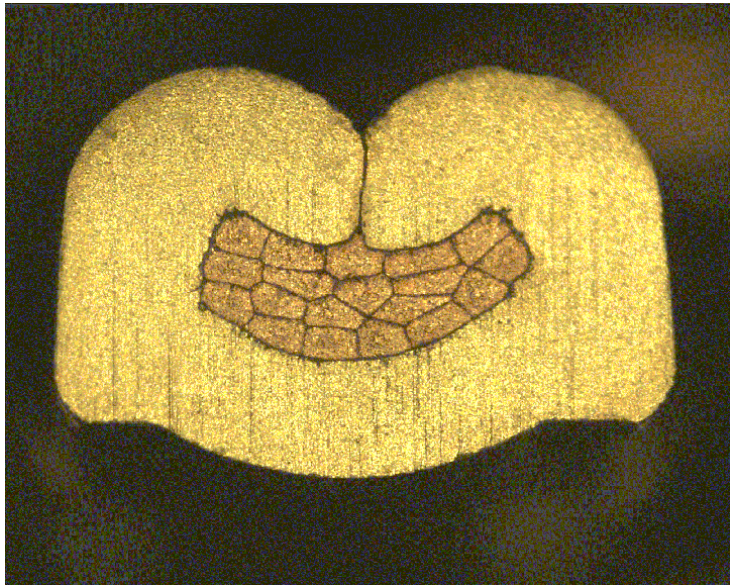
cable type : MULTISPEED 500-TPE
 insulation [φmm] : 1.5 – 1.6

seal : DPN 15324974

conductor dimension					crimp dimension [mm]				crimping tools		
cable type	cross-section [mm ²]	struct. n x d [mm]	insul. diam. [mm]	tear-out force [N]	core		insulation		designation		
					height ± 0,03	width ± 0,10	height ± 0,10	width ± 0,10	core	insulation	anvil
Multispeed 500-TPE	0,5/4x	19 x 0,17	1,55	80	1,30	1,90	4,05	4,20	C-1.85-4.0-12	IS-4.00-3.0-12-X GD 66,5	ASR-1.85-4.00-8.5-3.5-0.6
									DPN 10713712	DPN 10713788	DPN 10714005
											<u>two piece anvil</u>
											AC-1.85-4.25
											DPN 10764087
											AI-4.00-4.2-0.6
											DPN 10806983

MULTISPEED 500-TPE = SHEATH CABLE





DELPHI PN 12077628

cable: 0,5/4x = 19 x 0,17 mm

crimping height:
1,30 mm

crimping width:
1,90 mm

tear-out force:
80 N